

Teme TRIANGLE

Clifton-upon-Teme • The Shelsleys • Lower Sapey



The 'Warm Welcome' ladies at Clifton Village Hall

In this edition

- Fundraising quizmaster bids farewell
- Fun village hall events
- All your local Church news and courses
- Wildlife and historical findings in Clifton
- ... plus all your local Diary Dates

Visit the website

www.temetriangle.net

FREE to Residents



Above: Clifton Friendship Club doing yoga with 'Physio in the Sticks'. See P27.

YOUR TEME TRIANGLE TEAM

MAIN EDITORIAL MAILBOX

editortemetriangle@gmail.com

EDITOR THIS ISSUE

Louise Hutton

CLIFTON NEWS / WEBSITE

Jerry Johns: 01886 812304
crown.house@polperpropress.co.uk

SHELSLEYS NEWS

Michelle Whitefoot: 01886 812779
michelle@whitefootpr.co.uk

Louise Hutton: 07803 614078
louise@stroyd-hutton.com

LOWER SAPEY NEWS

Margaret Griffiths: 01886 853543
spock958@gmail.com

ADVERTISING/SPONSORSHIP

Andrew and Anna Brazier: 01886 887898
teme.triangle@thebraziers.co.uk

Opinions expressed in this publication are not necessarily those of the editorial team. Teme Triangle is not responsible for goods and services advertised. Contributions may be edited at the discretion of the Editor.

Front cover picture:

The 'Warm Welcome Ladies' in Clifton Village Hall.

Pictured (left to right): Michelle Crawshaw, Tracey Lowes, Louisa Grizzell and Vanessa Huntley.

WELCOME TO THE MARCH 2025 EDITION OF THE TEME TRIANGLE....

Many thanks for everyone's contributions to this month's edition. Do keep your articles and photos coming in - they are always most welcome.

Here's looking forward to spring finally arriving in March.....

AN EVENING OF OPERATIC ARIAS FOR UKRAINE

There are still a few tickets available for the evening of opera at The Hope, Clifton-upon-Teme, on Friday 14 March. Valery Sherlock, an accomplished Ukrainian soprano who lives in Martley is giving a spectacular charity recital of works by Verdi, Mozart, Puccini and Tchaikovsky as well as Ukrainian songs. Also performing is her bass-baritone husband Kieran Sherlock.

The event, hosted by kind permission of Candy & Shane Connolly, promises to be a night to remember for all opera enthusiasts. The proceeds will go to Valery's native Ukraine, to support the ongoing efforts after the Russian invasion.

An academy-trained operatic soprano, Valery began her musical path in her native Ukraine. She graduated from music school in piano class, Odessa Music College in vocal class and finally the Odessa Music Academy Opera vocal programme. Her repertoire includes Italian, Ukrainian, French, German and English arias from operas by Mozart, Verdi, Puccini, Bizet and Tchaikovsky as well as many international songs and ballads. She came to the UK from Ukraine nearly four years ago.



Kieran Sherlock made his performance debut in 2019 at Huntingdon Hall in Worcester and shares the same voice type Bass Baritone as Welsh Opera great Bryn Terfel. Their accompanist David Archer is a regular rehearsal pianist for Worcester opera societies.

Tickets for the event, including champagne and hors d'oeuvres, are £35 each and can be purchased from Jerry Johns: email crown.house@polperpropress.co.uk or call 01886 812304.

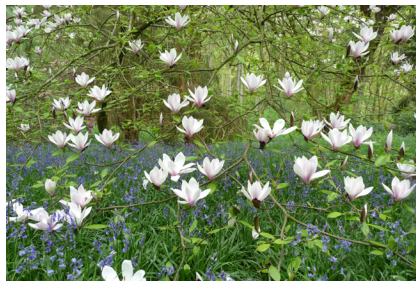
TEME VALLEY WILDLIFE GROUP

2025 seems to have delivered more dark and gloomy days than usual, with lots of grey skies, mist and fog. Rain and flooded roads have kept me at home, so I've used the time to think up a few ideas for excursions to make when the rain stops and the sun comes out.

Last year I had a little list on which was a visit to Gloucester to see the cathedral. Whilst in the area, a climb up the Cotswold scarp to find Hetty Pegler's Tump, a Bronze Age burial mound, afforded fantastic views over the Severn Valley and its tidal river. Enjoying beautiful landscapes always brings the possibility of seeing wildlife, so I was not surprised to find a host of wildflowers on the grassy top of the barrow. They had probably been flourishing there undisturbed for centuries.

A trip to Gloucestershire is on my list again this year because I've recently read an article about pasque flowers at a Site of Special Scientific Interest near Cirencester. I have never come across these plants in the wild, although they are sometimes planted in gardens, so to see their purple bellflowers or silky seedheads would really be something special. Although you hope to find what you are looking for on such occasions, it's always a bit "hit and miss". You have to accept that the plants might no longer be there or that they're not in flower on the day you visit. I've planned a couple of other wildlife walks too, in the hope of seeing otters or hares, using a Shropshire Hills Area of Outstanding Natural Beauty walks leaflet called "Walking with Offa".

I'm also hoping to visit Caynham church and camp, the latter being the only hill fort in the area that I haven't yet seen. Gardens are another priority. Last year, a trip to the National Trust's Weir Garden in Herefordshire was on my list, it is said to be best in spring but constant rain kept me away. A sunny, blue-skied day in May was a great success though, when I ticked off Hergest Croft Gardens near Kington. This is a garden whose footpaths I've tramped on a couple of occasions and whose gates I've passed many times, always with the comment, "must come back for a visit". And I can heartily recommend it. A fabulous arboretum full of inspired plantings of rhododendrons and azaleas was truly stunning and the tea and cakes were rather good too.



Stephanie Mocroft

One thing is for sure, getting out into the great outdoors is a source of enormous enjoyment. Despite my forward planning, it's not necessary to go far and it never fails to surprise me that it is possible to find interesting places and amazing wildlife close by. Last year, a circular walk from Stanford Church involved following deer slots on muddy footpaths for literally miles and was made special by the sight of a pair of hares and a pair of wheatears in the same field. And all within a stone's throw from home. How lucky we are to live in the Teme Valley.

The next meeting of the Teme Valley Wildlife Group will be at 7:30pm on Thursday 13 March, at Stoke Bliss and Kyre Village Hall, WR15 8RR. We welcome Dr Kate Ashbrook from the University of Worcester who will be telling us about "Enhancing biodiversity for sustainable food production". Members and friends are welcome, it is just £3 on the door or £25 for a year's membership.

To give us your sightings or comments, please contact us by email at twwg@outlook.com. Our programme of events, bird survey and archive photographs are available on our website www.temevalleywildlife.co.uk.

PURE THYME WELLBEING & BEAUTY

Pure Thyme Wellbeing & Beauty is delighted to announce its recent expansion, providing even more space to enhance its range of holistic and beauty treatments. Based at Mill Farm, Stanford Bridge, the salon already features an exceptional menu of services, including offerings from The Beauty Room, Bloom Aesthetics, and Samantha Green Aesthetics. Now, it is excited to welcome two new practitioners:

With over 20 years of experience, Joe Da Costa has been instrumental in helping clients overcome sports injuries, muscle aches, and postural issues. Known for his pragmatic yet spiritual approach, Joe is available on Mondays and Wednesdays. To make an appointment with Joe, please contact him directly on 07815 927524.

An award-winning healer and author, Hannah Darby specialises in grief counselling, HeartHealing™ Therapy, Reiki, and Indian Head Massage. Her compassionate care and expertise are sure to enrich our wellness offerings. Hannah can be contacted on hannah@healingwithhannah.co.uk or 07932 461506.

The new team look forward to welcoming you to the expanded space and helping you on your journey to wellbeing and beauty. For more information or queries on all the treatments on offer, please contact Pure Thyme Wellbeing & Beauty on 07964 176747, or email info@purethyme.co.uk.

**NIC SPROSON
THE OPTICIAN**

Contact Lens Specialists

* Patient Car Park *

52 Barbourne Road, Worcester

Tel: 01905 27327

www.nicsprosontheoptician.co.uk

enhanced movement
studio

WWW.ENHANCEDMOVEMENTSTUDIO.CO.UK

pilates

couch to 5k

MONDAY 8:30AM
TUESDAY 6:30PM
THURSDAY 8:30AM
THURSDAY 6:30PM
FRIDAY 8AM

LEAVING FROM
MILL FARM
STANFORD BRIDGE

EVERY MONDAY
6:30PM
(FROM 25TH OCTOBER)

RUN CLUB
EVERY WEDNESDAY
(FROM 27TH OCTOBER)

NOW AT
PITLANDS
CLIFTON-ON-TEME

£5/SESSION

PLEASE ENQUIRE ABOUT
'COUCH TO 5K & RUN CLUB'

 07989 535 757 *ehg*

David Ward
firewood

Do you need a dependable consistent quality supply of seasoned or kiln dried hardwood and softwood firewood?

Cut and split to suit and delivered in breathable 1.2-cubic metre bags, so no need to restack.

Small delivery vehicle, fitted with crane, can deliver to most locations and situations.

CALL DAVID TO DISCUSS YOUR REQUIREMENTS:
Mobile: 07866 441154



The Apple Tree Kitchen

01886 812 431

WR6 6DX

Set in the beautiful grounds of Pitlands Farm Holidays
| Fully licensed | Breakfasts | Lunches | Cakes | Coffees |
| Afternoon Teas | Gardens & Grounds |
| Children's Play Ground |
| Function room available with catering for every occasion |

Open Thursday - Sunday 9:30am - 5:00pm

www.theappletreekitchen.co.uk
info@theappletreekitchen.co.uk



BY TRACEY BIRKS
Enjoy the elegance of handmade Curtains, Blinds and Soft Furnishings that will truly transform your home.
Contact Tracey for a free home consultation:
☎ 07831 818104
✉ tracey@meadows-soft-furnishings.co.uk
@meadowssoftfurnishings  
www.meadows-soft-furnishings.co.uk

HainesHeating 
07534 700 932
**Oil & Gas Boiler service
& repair specialist**
Clifton-On-Teme
www.ahainesheating.co.uk

LET THE MUSIC PLAY
DJ Jan Blazak
Mobile Disco & Laser Light Show
www.let-the-music-play.co.uk
07850692905

Hallmark Whatley Hulme
Solicitors

**Specialists in Private Client Services -
Wills, Estates, Powers of Attorney
and Court of Protection**

A modern personal service in a digital world

Home visits if required
Free parking for consultations

*Accredited member of
Solicitors for the Elderly*

Contact the team on **01905 726600**
or email
enquirieshwh@hallmarkhulme.co.uk

We also offer the following legal services:
Property, Employment and
Civil Disputes / Litigation

www.hallmarkhulme.co.uk

A. H. CALDICOTT & SONS

Funeral Directors

15 MARKET STREET,
TENBURY WELLS, WORCESTERSHIRE
TELEPHONE: 01584 810281
FAX: 01584 811420

*A family
run business
established 1919*

*Burials
Cremations
Chapel of Rest*

TVC TEME VALLEY COACHING

Are you fed up with dieting?
Support, guidance and motivation
to achieve long-term lifestyle changes.
Free initial conversation
Online, in person, or outdoors.
Contact Teresa for more information:
temevalleycoaching@btinternet.com

WALKERS WOOD
EST. 2022

FIREWOOD SPECIALIST
Bags & Bulk
Locally Sourced Hardwood Firewood
Call Ed on 0758 333 8879 for a quote

 T/A Walkers Wood
Certificate No: WS5447/00001

PICTURE, PHOTO, ART, SHADOWBOX, CANVAS
FRAMING
You name it, we can frame it!



Framing Marvellous
1 Maylite Trading Estate
Martley, WR6 6PQ
Free parking
Call 01886 888766 or scan to
contact us for appointment: 

Jeremy Massey Electrics



- ✓ Domestic, Commercial & Industrial
 - ✓ All Work Guaranteed, Insured, including indemnity
 - ✓ Re-wires and New Builds
 - ✓ Additional Sockets, outside and inside
 - ✓ Lighting including, Smart, LED, outside and inside
 - ✓ Inspection and Testing - including rental properties
 - ✓ Armoured cable installation
 - ✓ EV Chargers
 - ✓ CCTV
- Telephone: 01886 888493
Email: masseyjeremar@aol.com

AQUA CLEANSING Ltd

SEPTIC TANK EMPTYING

- Cesspool & Pump Stations
- Soakaways 
- Blockage Clearance
- Sewage Treatment Engineers
- Pumps, Compressors & Servicing
- CCTV Drainage Surveys

www.aquacleansingltd.co.uk
enquiries@aquacleansing.co.uk

Call us now for free advice & quotation

01886 888471

Berrow Green Road, Martley, Worcester WR6 6PQ

Fast reliable service established for over 30 years



**especially through
end-of-life care**

**Contact
Juliet Twinberrow
BVM&S, MRCVS
07772 799754**



Visit us at Mill Farm, Stanford Bridge,
for beauty and holistic treatments

**Please call for an appointment or
more information on 07964 176747
www.purethyme.co.uk**

PHIL GRAY Dairyman / Newsagent

*National... Daily... Sunday & Local Papers
... Magazines... All Milk...
... Dairy Products... Eggs... Soft Drinks
... & Waters etc.*

Let your Milkman do the Walking
01584 881385 / phil@eardiston.com

the Arts & Crafts workshop

www.artscraftsworkshop.co.uk

Visit our website to see and sign
up for events, or call 01886 888766
for more information.

the Arts & Crafts Workshop
1 Maylite Trading Estate
Martley, WR6 6PQ



01886 889248

Hairdressing and Barbering salon now open in Martley
next to the Maylite trading estate

Senior Citizen discount available on a Wednesday starting
from the 1st March 2020

Late Nights Wednesday and Thursday's until 8pm

Telephone the salon for all appointments and enquiries

Local Handyman & Property Maintenance

Ring Ash
07534 809814



asqservicesteme@gmail.com

Wichenford Mole Man

- Call - 07855 674760
- *Problems with Moles in the garden*
- *Professional, Reliable & Discreet*
- *Traditional methods only used*



CANTS Tree Maintenance

For all your tree &
garden needs

NPTC qualified, fully insured, professional tree surgeon

07513111588



C.L. GIBBS BUILDERS

**EXTENSIONS • ALTERATIONS
PLASTERING • UPVC WINDOWS
ROOFING • TILING • LANDSCAPING
FASCIAS • GUTTERING • STONE WORK**

For all types of building work call your local
family builder for advice and free estimate

**01886 812 450
07905 396 971**



ANDY PRITCHARD PAINTER & DECORATOR

Fully Qualified & Insured



All aspects of decorating undertaken, including
Interiors, Exteriors, Tiling and Paper Hanging
For free estimates & quality workmanship
contact Andy.

**07973 783240 - 01866 889001
pritchard378@btinternet.com**

IONA WORSHIP

A pattern of prayer, singing and imaginative engagement with scripture, that reflects our life together as a community, as we celebrate God's presence in our lives.

You are invited to join us at
Hanley Broadheath Village Hall, WR15 8QU.
You will find a warm welcome and light refreshments.

Services are at 4pm on the following Sundays:

- 13 April – Palm Sunday
- 11 May – Christian Aid Week
- 8 June – St Columba
- 13 July - In the Summertime
- 10 August - Lammas
- 14 September - Harvest
- 9 November at 4pm – Remembrance

Want to find out more? Then please email;
Rev'd Jen Jones on tvscurate@gmail.com

CLIFTON PARISH COUNCIL SUPPORT FOR CITIZENS ADVICE

Clifton Parish Council agreed to donate £500 to the South Worcestershire Citizens Advice, after receiving a report of the work carried out on behalf of Clifton residents in 2024:

- 12 individual clients advised on 16 different issues
- 13% of residents' issues were related to welfare rights and money advice
- 71% of the clients from the parish were disabled or have a long-term health condition
- One resident was referred for foodbank vouchers

"We don't charge for any of our services," said Citizens Advice Chief Executive Officer Annie Robson. "We believe everyone should have access to quality, impartial advice and it should not depend on your income. Though we are a big, well-known brand, we are a small charity with only a third of our required funding coming from local authority grants, leaving us reliant on donations, short term funded projects and other sources of income to be able to deliver our valuable services."

Lent News from Local Churches



What's Lent about?

Lent may originally have followed Epiphany, just as Jesus' sojourn in the wilderness followed immediately on from his baptism, but it soon became firmly attached to Easter. It became the principal occasion for baptism and for the reconciliation of those who had been excluded from the Church's fellowship for whatever reason. This history explains the characteristic notes of Lent – self-examination, penitence, self-denial, study, and preparation for Easter.

Muddy Boots Mission Area Lent Reflections

As usual there will be Lent Reflections across the Muddy Boots Mission Area (Wyre Forest West, Four Rivers and Teme Valley). We'll be following the book "Clinging to the Cross" by Mark Tanner who is the current Bishop of Chester - he writes in an easily understandable manner.

Mark Tanner says about the book: "Faithful to Christ, loving your neighbour... it has always been a challenge, and it doesn't get any easier for the Christian in the modern world. This, though, is the heart of the Christian's call, the core of our identity, and our greatest privilege."

Locations and times

Great Witley - there will be face to face sessions in the Four Rivers Group at 1400-1530 on Wednesdays these being held at the Rectory which is 1 Chiltern Close, Great Witley, WR6 6HL. The sessions are:

12th March, 19th March, 26th March, 2nd April, 9th April, 16th April

Contact David for details.

Online – these will be via Zoom on the Wednesdays in Lent at 1900-2030. Contact Sallie for more details

Around the Teme Valley – these will be held on Fridays in Lent from 1030-1200 in various people's homes. Contact Julia or Jen for details

Feel free to mix and match as best suits your commitments.

Contact details are given below:

Rev'd Sallie Butcher on 01299 896837 or email at sallie@psc-abberley.co.uk

Rev'd Julia Curtis on 01886 853286 or email at revjuliacurtis@gmail.com

Rev'd Jen Jones email at tvscurate@gmail.com

Rev'd David Morris on 01299 896783 or email at revdm777@gmail.com

LETTER FROM DAME HARRIET BALDWIN, MP FOR WEST WORCESTERSHIRE

Farmers have again been out on our streets protesting at the terrible threat the Family Farm Tax will have on our rural economy. Generations of farmers will slowly and inexorably be wiped out by this pernicious tax change and I share the worry our rural food producers are feeling. As I regularly point out to Members of Parliament who say they don't have farms in their constituencies, if you eat food, you are reliant on our valiant food producers. This tax change must be reversed.

The changes to Inheritance Tax are just one of the terrible decisions by the Chancellor threatening to throw our economy into what may be termed 'Rachel's Recession'. The increase in employer's National Insurance contributions is forcing employers across West Worcestershire to re-think their growth plans and scale back their staffing numbers. This is another u-turn I urge the Chancellor to embrace.

The Chancellor's latest 'growth' plan has highlighted how important rail links are, not just between Oxford and Cambridge, and I continue to press for the dualling of sections of the North Cotswold Line allowing faster, more frequent trains from Worcestershire to Oxford and beyond. If we are to have thousands more homes imposed on us in our rural location, then significant infrastructure investment - the road and rail links, the GP surgeries, schools and dentists - must come with this housing.

My final hint to the Chancellor is that we need an energy policy that works. When the sun fails to shine and the winds are light, we are far too reliant on foreign oil and gas and I urge the Government to unlock our natural resources in the North Sea to end this self-induced disaster.

COME AND ENJOY A SHELSLEY NATURE WALK

A Valley Walk will take place on Sunday 6 April.
Meeting at All Saints Church, Shelsley Beauchamp at 11am.

Approximately 2 miles.

Please wear sturdy footwear and appropriate clothing for the weather conditions. Dogs on leads welcome.

For more details contact Karen Metcalfe
kmetcalfe.shelsleyspc@gmail.com

BOOK NOW FOR SHELSLEYS PCC'S

CurryOki Night!

Saturday 8 March, Shelsleys Village Hall

Tickets £20 per person for a delicious 3-course meal, including curry, pudding & cheese (veggie option available). Please bring your own cutlery, plates, glasses and wine. Bar also open.

You can also enjoy a mass sing-a-long to a few old favourite pop songs, including Sweet Caroline, Do Wah Diddy Diddy and a couple more!

All monies for All Saints Church.

Details & tickets from David Moore 07980 271703

A Fun Night At The Races



Clifton Upon Teme Village Hall

Saturday, 15 March

Tickets £5

All funds raised for the vital upkeep of your Village Hall

Stalls Open 6pm... First Race 6.30pm
Enjoy food/snacks and a licensed bar
Raffle & Spot Prizes
Tote Facilities

To book or find out more please contact
**Andy Arnold on 07415257412 or email
andyarnold62.aa@gmail.com**



HUNTLANDS FARM BED & BREAKFAST AND UPHOLSTERY

www.huntlandsfarm.co.uk

Tel: 01886 821955 / 07828 286360

OFFERS:

upholstery classes • upholstery commissions
en suite b&b accommodation • wedding venue
all in an idyllic, rural setting on a working farm.
And a self-catering, 6 bedroom farmhouse on an
adjacent farm, www.moorhallfarm.co.uk

*Your hosts, Lucy, a custom upholsterer and
Stephen, a passionate cook, guarantee you a comfy
stay with freshly prepared, local food to enjoy.*

WRIGHT CUT

MOWING SERVICES

- Mowing
- Strimming
- Hedge Cutting
- Garden Clearance



07940704864

Regular or one-off visits.

Any job considered, Please ring for more information.

DBS Checked | References available.

Email: owright969@gmail.com

Ombersley Family Dental Practice

MRS ANDY WRIGHT B.D.S. (EDIN)

A friendly private practice
specializing in preventive
dental care for all the
family in a happy relaxed
atmosphere.



New patients welcome

Cosmetic treatments including tooth whitening
Sports gum-shields for all ages in
various colours and designs
Same day emergency appointments
Large car park

Tel: 01905 621881

RACKS LANE, OMBERSLEY,
NR DROITWICH, WORCS. WR9 0EN
www.ombersleyfamilydental.co.uk

Tipton Hall Riding School

Riding lessons for all ages and
abilities.

Hacking through wonderful
countryside.

Horse Livery-small friendly
yard.

Roger Benbow
BHS(A) Reg. Instructor

Phone: 01885 488791
mobile: 07792 358741
www.tiptonhallridingschool.com



Clifton Upon Teme Nursery And Forest School

3 months to 5 years

7:30am - 6:00pm

50 wks per Year

Contact Abi or Lottie on 01886 812380 or
manager@cliftoneyc.co.uk

Breakfast Club Available for Clifton
Primary School available



MARTLEY OSTEOPATHS

Do you suffer from back and neck pain?
Do you need help with a sports injury?

Call us now on 01886 889 002

Let our team of expert practitioners help you
recover and get pain free

www.osteopathiccentre.co.uk

Osteopathy - Sports Massage Therapy

Charity number: 1056248

MARTLEY & DISTRICT
PRE-SCHOOL

Monday-Friday
9am-3.15pm
Ages 2-5

Forest School Sessions

Full & Half Days Available
Indoor & Outdoor Facilities Available
ALSO!

Breakfast Club 8am-9am
After School Club 3.15pm-6pm

SERVICED OFFICES AND WORKSHOPS AVAILABLE ON FLEXIBLE MONTHLY TERMS ALSO SMALL INDUSTRIAL UNITS

www.maylite.co.uk

Please contact Kate Shrubbs on
01886 888455 for more details

MAYLITE Business Centre

MAYLITE TRADING ESTATE,
MARTLEY WR6 6PQ



K&B CATERING
TAILOR MADE QUALITY MENUS
FOR ALL YOUR CATERING NEEDS

KIT BAMFORD

For all your outside catering requirements,
please call me on:

Tel: 07801 699597

Email: kitbamford@live.co.uk

NEW ELECTORAL ROLL

Every six years, All Saints Church Shelsley Beauchamp (with St Andrew's Shelsley Walsh) has to create a new electoral roll, and 2025 is the year!

Why should I join the electoral roll?

The electoral roll is a record of the support and interest the church has in the Shelsleys. Joining the electoral roll also means you can vote on appointments such as the Churchwarden and Parochial Church Council (PCC) members, at the Annual Parochial Church Meeting (APCM).

Who can enrol?

You can join the electoral roll if you are resident in the parish, and are over 16. Non-residents who have regularly worshipped in the parish over the past six months can also enrol.

We would encourage anyone who fits the criteria to enrol, especially if you have a relationship with or support the churches in any way, for example our bellringers, cleaners, gardeners, flower arrangers, or if you've enjoyed attending a service or event at either of the churches.

If you are already on the electoral roll, you will need to re-register.

Please contact Holly Perks on 07916 461732, or pick up a form from one of the churches.

GARDENERS QUESTION TIME

Saturday 26 April

at St Bartholomew's Church, Harpley, WR6 6HG

Prosecco and nibbles at 7pm, Question Time at 7.30pm
£20 per person

Panellists to include Patrick Swan, Horticulturalist and Trustee of the Quiet Garden Movement; Robert Myers, 2024 RHS Chelsea Gold Medal Winner; Butter Wakefield, award-winning Garden Designer; and in the chair: Shane Connolly, Floral Designer and Author.

To book a place and/or send your gardening questions and conundrums, please email Tony at HarpleyChurch@gmail.com, or call Jill Smith on 01886 853311

Celebration Daffodil Day at Stanford on 22nd March

Come and enjoy an arts event inspired by the daffodils. Try tile painting, card-making for Mother's Day, 3D art and painting pictures.

Stanford Village Hall
Refreshments

2.30-5pm

Church open and any
proceeds to the Church

Contact:

Alexandra 07891 346783

CLIFTON QUIZMASTER RAISES THOUSANDS FOR LOCAL CHARITIES

Clifton quizmaster, Tony Clark, conducted his last pub quiz at the Lion Inn at the end of January, having raised thousands of pounds for local charities.

Tony was presented with a number of farewell gifts by Andrea Bennet and Simon Leach, the landlady and her partner; but most cherished was the engraved glass tankard to remind him of the monthly Clifton quizzes.

Right: *Tony Clark, Clifton's fundraising quizmaster.*



"It's been great fun," said Tony, who is moving south with his wife to be closer

to his immediate family. "I started the monthly quizzes in The Lion about three years ago just to support the village and it has attracted quite a following ever since. I don't always get it right on the night and the boisterous but friendly banter let's me know about it."

Thanks to the generosity of The Lion Inn Quizzers, Tony's last quiz raised more than £160 towards the cost of a new electric wheelchair for a local teenage girl, Misha Mills; who has cerebral palsy and a heart defect. Her mother, Tracey, is trying to raise enough money for a new power wheelchair via the GoFundMe website: "Every penny of any money raised will go directly to get her a new power chair and any monies left would go towards getting equipment to set up her own YouTube vlog for when she leaves college," says Tracey Mills. "I really hope we can achieve this goal and thank anyone that even spends the time to read my page, even if they don't donate."

CLIFTON GARDENS WILDLIFE SURVEY OFFER

Clifton Parish Councillor Lyn Merrick is offering to carry out a free survey of the wild flowers in gardens in the village and suggest ways in which they could be improved for wildlife.

Last year Lyn had a rare sighting of a pair of Pearl-bordered Fritillary butterflies in the parish, a butterfly that has declined rapidly in recent decades.

"Everyone wants butterflies, but not everyone knows the larval food plant. If local residents would like a list of what wild flowers are growing in their gardens and how they could improve them for wildlife, I will do it for free. It would be great to get people to care about conservation."

"The aim is to increase the diversity of Clifton," she added. "That is why the whole Four Acre Meadow site is not just a Wildlife Area - we now have the beginnings of a wildlife corridor, with the new hedge and two-meter uncut headland running down to the mature hedge and ditch. This is a start in fulfilling the Government's requirements that councils, both county and local, improve the diversity of their communities. Recording the pair of Pearl-bordered Fritillary butterflies last May was a great start."



Above: *The Pearl-bordered Fritillary butterfly.*

100 YEAR OLD BOOT FOUND IN CLIFTON

A child's boot, thought to be at least 100 years old, has been found by Clifton resident Beverley Powell in the course of renovations to their house.



Below: *Beverley Powell with the recently discovered child's leather boot.*





SHELSLEYS VILLAGE FÊTE & FUN DOG SHOW



SUNDAY 29 JUNE

SAVE THE DATE!

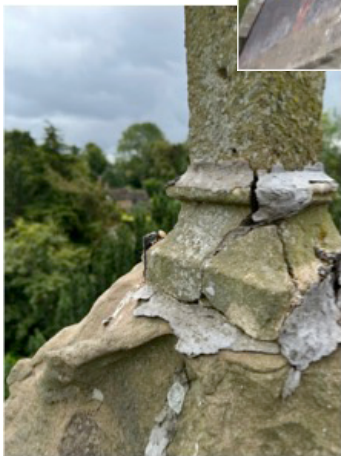
More details to follow.....watch this space!



ST KENELM'S APEX CROSS REPAIRS



See the full article on P21 for further details.



ST KENELM'S NEWS

Bellringers are continuing to practise but have moved to practising at Martley Church while the tower is assessed for possible subsidence issues. The team are beginning, with a lot of help, to ring rounds!

If anyone wants to come along and see what we do and have a go, you will be most welcome at Martley Church on Monday's at 6.30pm. Please contact Mike Snelling on 01886 812443.

Warm Welcome continues to meet weekly on Thursdays at 10.30am to 1pm, with lunch served at 12noon. The Warm Welcome Families group also meets Thursday 10am to 11.30am, offering craft, play, stories and songtime for the children. Both sessions are held at the Village Hall.

On the fourth Thursday of the month, a representative of the Citizens Advice Bureau visits to help anyone with support or information on any issues.

Soul Space meets at the end of Warm Welcome, for those who would like a short time of quiet and reflection. This is on the second and fourth Thursday of the month, at 12.45pm in the Rowberry Room in the Village Hall. The next meetings will be 13 and 27 March.

Church Repairs: The shingles have been replaced on the spire. (See the photo to the right). The ladders have been left in place until the Spring in case any more shingles are lost in future high winds. It is costly and time consuming to put them in place as there are also ladders and ropes internally in the spire. The apex cross on the roof has also been removed and is currently in store as it was unstable and moving at the base, causing damage to the stone below. The next steps are under discussion!

Volunteers: If you would like to help with brass cleaning, church cleaning, gardening or other jobs around the church, please contact Ruth Wilson. Volunteers are always very welcome!

Ruth Wilson, Church Warden



SERVICING & REPAIR
ALL TYPES OF
GARDEN MACHINERY



BRIAN BUTLER
Clifton-on-Teme
07929 014804 Daytime
01886 812538 Evening

COLLECTION and DELIVERY

NICK CHAMPION
PROPERTY | AUCTIONS | AGRICULTURE | PROFESSIONAL

YOUR LOCAL PROFESSIONAL, INDEPENDENT RESIDENTIAL & RURAL PROPERTY SPECIALIST.

- SALES
- AUCTIONS
- LETTINGS
- ACQUISITIONS

NICK CHAMPION LTD
16 Teme Street, Tenbury Wells, Worcestershire, WR15 8BA
Tel: 01584 810555 | Email: info@nickchampion.co.uk
www.nickchampion.co.uk

PestArrest Pest Control

For all your local pest control requirements,
All domestic and commercial pests covered

RSPH level 2 qualified
Fully insured

Telephone **Jon Staples** on:
07894 739464

Email: pestarrest.pestcontrol@outlook.com

TVA
TEME VALLEY ACCOUNTS

Bookkeeping VAT
PAYE Sage Accounting
Tax Returns Draft Accounts

Contact: Claire on
Tel: 01584 881708 or 07731 010099
Email: Claire.tva-accounts@outlook.com

Party / Business / Reception / Function

CLIFTON VILLAGE HALL

Three meeting rooms (2-120 people)
Modern, well-equipped kitchen
with crockery, glasses etc.
Good parking in central location.

**Bookings: 01886-812238/812969/
812335 or hallchire.com**

PC Troubles?

- PC problems solved
- Broadband connection set-up
- Home network set-up
- Printer and camera problems solved
- Website design service
- Basic PC training at home

For friendly and local advice and to book a free consultation contact

Bernadette Higgins on 07813 302 504
or e-mail: apctrouble@gmail.com

LUXURY CATTERY
Call Lesley on 01886 821154

- New luxury Cattery set in beautiful open countryside. Run by genuine cat lover.
- Fully Licensed and Insured.
- All chalets have heated bedrooms and spacious play runs.
- Special needs and diets catered for.

Kitty's Cattery
Coronation Cottage, Broadwas (Nr. Martley), Worcester, WR6 5NT
www.kittyscattery.co.uk kittyscattery@hotmail.co.uk

*Open 7 days a week,
Our Menu offer a variety of dishes.
Locally sourced meat – Knightwick butchers.
Choose from a range of traditional pub classics.
Home-made pies
In house beer battered cod.
To book a table
telephone 01886812226
Website:
thenewinncliftonupon teme.co.uk
Facebook:
The New Inn Clifton-upon-Teme*

Self Storage Units

20ft Shipping Containers
at Stanford Bridge
Under cover
Security lighting

Please contact Alex
on 07973 624318
or 07966 865015

TAYLORS
CONSERVATORY CARE

22 Saxon Close
Clifton upon Teme
Worcester WR6 6DL

Mobile: 07801 281821
Tel: 01886 812424
Fax: 01886 812954

Sales • Service • Repair
SUPPLY • INSTALLATION • AFTER SALES CARE • RE-ROOFING

We supply and fit:
Aluminium Windows and Doors • uPVC Windows and Doors
Hardwood and Softwood Windows and Doors
Conservatories in Hardwood / uPVC / Aluminium
PILKINGTON APPROVED INSTALLERS
Agents for Compton Garages & Alton Greenhouses
Please phone for Free Quotation • Fence Registration No. 18796

SHELSELY VILLAGE HALL FOR HIRE

Set in beautiful surroundings
(with french windows leading onto terrace)

Close to the river and hillclimb
Well equipped kitchen • Bar available
Ideal for meetings, dances, parties etc.

VERY REASONABLE RATES

Contact for bookings
Dave Bates 01886 812551
www.shelsleys-vh.uk

Paul the Painter

Your local professional Painter
& Decorator

All interior & exterior work, from a single
room to a whole house.

Tel 07759 298754
E-mail paulthepainter23@msn.com



Laurence Green - 07809 495848
laurence@theorchardtamers.co.uk
www.theorchardtamers.co.uk

WE FIX FRUIT TREES & MAKE WILDLIFE WELCOME
1 garden tree or 10 acres
Gardening for wildlife
Help, advice and training
Great present idea!



Naturally beautiful & fragrant
British flowers for all occasions
kate@camomilecornflowers.co.uk
01886 812184 07887 706147



**YOUR LOCAL
OPTICIAN**

18 Teme Street, Tenbury Wells, Worcestershire
01584 811445

Are Your Locks Behaving Badly

Check A Lock Fix A Lock

- No Call Out Charge •
- Free Onsite Estimates •

All Types of Door & Window Locks
Opened • Repaired • Serviced
Jammed Doors • Faulty Locks
Lost • Broken or Poorly Cut Keys
Wooden-UPVC Door & Window
Multi-Point Lock Repair Specialist
Doors Adjusted & Realigned
No Job Too Big or Small
For More Advise Call Stewart

THE LOCKSMITH
01905 570 999 07871 44 20 11
Local Reliable Independent Locksmith
www.locksmithworcestershire.co.uk



CS-PLUMBING.CO.UK

07972 435102

Are you looking for local professional
plumbing services?
Contact us and we will get your plumbing fixed
quickly and efficiently.

chris@cs-plumbing.co.uk



07972 435102



**For an Affordable
& Reliable Electrician
Choose REWIRED!**

The Power Behind
Teme Valley...

01886 853 011
07421 748 288

www.rewired-worcester.co.uk



Teme Valley Window Cleaning

We are a local eco-friendly window cleaning company providing a
professional and reliable service
Frames & Sills cleaned as standard

Call Mark 07776 254710

temevalleywindowcleaning@gmail.com



Liz Whittaker - lady chauffeur
Affordable Comfort Travel in Style
Transport solutions for up to eight passengers.
All air and seaport. Wedding and sporting events.
Local and National journeys. **07814 006179**



OPEN FOR BEER SALES 7 DAYS
BAR OPEN FOR FOOD AND DRINK
FRI 5PM / SAT & SUN 1PM
LIVE MUSIC EVERY SATURDAY

FOR MORE INFO ON TIMES AND SPECIAL EVENTS
FIND US ON FACEBOOK AND INSTAGRAM
WWW.SPILSBURYANDJONES.CO.UK

FOR PRIVATE HIRE OF THE WHITE PHEASANT 07966 294032



- Woodburning & Multifuel Stoves
- Stove Spares & Repairs
- Glass, Ropes, Bricks, Baffles, Cleaners
- Chimney Liner Kits & Flue Pipes
- Kiln Dried Logs, Kindling and Firelighters

01886 812452
www.is-stoves.co.uk

Steps Farm
Clifton Upon Teme
Worcester
WR6 6EN

Showroom & Online Shop

CLIFTON-UPON-TEME PARISH COUNCIL

Minutes of the meeting held 6 February 2025

Present: J. Bowden (Chair); P. Brooks; S. Haywood and L. Merrick. **Also present:** District Councillor Paul Cumming, Sarah Simcock (Clerk) and five members of the public. **Apologies:** County Cllr D. Chambers, District Councillor Pam Cumming, B. Gilbert and R. Neave. **Declarations of Interest:** None. **Minutes of the Meeting held 9 January 2025:** proposed P. Brooks, seconded by L. Merrick. **Matters arising:** Nothing to report.

Democratic Public Time: Nothing to report.

County & District Councillor reports: The County Councillor's report was read out by the chairman. District Councillor Paul Cumming gave a verbal report about the council becoming a unitary body, but no decision on it going to be north and south Worcestershire or entire Worcestershire; the county wants an entire Worcestershire. Elections are going ahead; two areas of concern: going entire Worcestershire would mean local contact will go. The other concern is finance; where residents' benefit. Will find out more after elections on the 25 March what services will still be available. Paul Brooks asked about food waste. Paul Cumming will find out more.

Finance & Governance Matters: Payments and receipts schedule – proposed Cllr John Bowden, seconded Cllr P. Brooks. All agreed. Section 106 matters – Cllr Bowden has asked all parties to attend a meeting at the pavilion to write everything down and then get the QS to put the budget price together. Recreation ground: a couple of items for Rob Wilks including the paving and the fencing around the bowling green. MHDCouncil have confirmed we can use the 106 money for the planning application. Wildflower garden: Cllr Lyn Merrick gave an update; the hedge has been put in. She mentioned that a pile of logs would be used for an invertebrate bank to encourage invertebrates and hedgehogs and asked if anyone in the village would like to donate logs. She has also drafted an information board. Cllr Bowden has given MHDC a copy of the draft; they also gave him an example of a board they would like to put up for the whole area. Bird boxes and bird baths are included in the plan. Cllr Merrick said she would like to increase the butterfly diversity in Clifton. If anyone would like any information about their own garden, please contact her. Cllr Brookes mentioned that Bruce Gilbert said that the National Networks £15,000 had been successful and three benches have been ordered; planting is complete, the fencing will be removed in about a month. Pavilion updates: Cllr Bowden gave update earlier in meeting.

Parish Matters /Updates: Village Maintenance Plan – The three new litter bins are in place. Cllr Haywood informed the council that one of the new bins has been damaged by a lorry parking overnight on the rec. Cllr Bowden said he will check signage about overnight parking. Rocking Horse – Cllr Bowden spoke to Lee James about repairing the horse and when he removes the horse, he will put restrictors on the mechanisms with a box and padlock.

Planning Matters: Nothing to report.

Strategic Planning Matters: SWDP update – Cllr Bowden said he had applied to go to the meetings and was told he is welcome and no more information needed at this stage. Interest has been declared.

Highways Matters: Cllr Brooks mentioned people are parking on the pavement in

Manor Road. Cllr Bowden will be writing to the local police officer to see if it's a police problem or a highways problem. It was also mentioned that people are parking by the school, especially on the T-Junction, which is dangerous. Cllr Bowden asked the Clerk to write a letter to the Nursery about the parking situation. Cllr Brooks asked about the bus shelter; Cllr Bowden has written to Platform Housing Association about the piece of land. Cllr Brooks suggested the 30mph sign on the road from Tenbury could be extended from the existing 30mph zone to the dangerous corner; the residents who live near that area have problems and there is a footpath nearby. Cllr Bowden to speak to Tanya from Highways.

Councillor Reports & Items for Future Agendas: Cllr Bowden spoke about the water meters: still ongoing. Sign for defibrillator box: Cllr Bowden will put together. The 55 houses planning application: Cllr Bowden has checked the website; it says 99 people have objected. Grit bin in Pound Lane now waiting for an inspector to check it. Email from a local resident was read out by the chairman suggesting having a flood camera monitoring Ham Bridge. Councillors agreed that it only floods a couple of times a year but it was suggested that the Shelsley bridge gets flooded more frequently and it's quite dangerous. As it's in another parish, contact them to see if they are doing anything about it. Citizens Advice had emailed the council asking for a donation; agreed to donate £500. Letter has been sent to Harriett Baldwin MP inviting her to the official opening of the sports and children's play area on 5 May. The auditor's questions in an email were answered and duly noted. Form for Scottish Widows account needs to be filled in to change signatories. Cllr Haywood reported that speeding through the village is getting worse; people are not paying attention to 30mph speed limit. Cllr Bowden will include it in the email to the police.

Date of next Meeting: Thursday 6 March 2025 at 7.40pm in the Village Hall.

CLIFTON-ON-TEME FRIENDSHIP CLUB

The Clifton Friendship Club welcomed Amanda, Maddie and Leah from 'Physio in the Sticks' at its first meeting last month (February).

"They put us through our paces with some exercises that certainly warmed us up," said Dot Milward. "We were then ready for our tea and cake."

Wednesday 5 March is the Friendship Club's annual club birthday meeting, with fish and chips provided by Pete's mobile fish and chips van.

On Wednesday 19 March, wildlife photographer Nick Martin will be making a return visit and on Wednesday 2 April, three members will be celebrating nought birthdays, as well as a 50th wedding anniversary.

Visitors and new members are always welcome.
For more information, contact: dotmillward@btinternet.com

Paddington in Peru

Cert: PG - 106 mins



Sat 8th Mar - 4.00 pm
Clifton On Teme Village Hall

Admission: Adults: £5 Under 16s: £2.50
Enquiries: 01886 812238/ 07765 460249

Bar before the film and during the interval. Tea/coffee/homemade cake available during the interval. Tickets can be purchased on the door. Tuck Shop run by the PTA Clifton upon Teme Primary School.

He's back! Paddington in Peru sees our duffel-coated, marmalade-infused hero venture out of London and return to Peru to visit his beloved Aunt Lucy, now residing at the Home for Retired Bears. With the Brown family in tow, a thrilling adventure ensues when a mystery plunges them into an unexpected journey through the Amazon rainforest and up into the mountain peaks of Peru.

Starring: Ben Whishaw (voice), Hugh Bonneville, Emily Mortimer, Antonio Banderas, Olivia Colman, Julie Walters



LOWER SAPEY NEWS

I apologise for the brief article this month as my husband is quite ill, but I must mention the continuation of this miserable weather. Yes, it is winter, but it just seems gloomier each day at the moment. How we all long to see some real spring weather and to get outside to work in the neglected gardens. Then we must all enjoy every single day, as the scientists say that an asteroid is predicted to collide with earth or with the moon in seven years' time. Happy days!

The renovations in St Bartholomew's Church are still going ahead, but mainly because of the inclement weather, we won't be holding services until Easter time, mid-April. All the new plaster needs warm, fine weather to dry it out. We all miss our church very much.

PARISH WALK

David Richards is carrying on the tradition, established by his late father, in organising a Parish Walk, but moving the time of year to the spring. He has entitled this year's walk 'Walking the Glebe'.

It will be on Sunday 23 March at 10am and will cover many places of interest in this area. The distance will be about two-and-a-half miles and the walk should take about two hours. It will be relatively easy walking.

Please bring refreshments if you wish. If you would like to join us, please contact David on 07765 866489.

NOTICES

There will hopefully be services in St Bartholomew's at Easter time, but please look out for notices.

Pat Savage has volunteered to hold our next Ladies Bible Group meeting on Tuesday 11 March at 2pm and she is also going to host a Lent Course starting in March.

The Mobile Library will call on Friday 21 March at 10.20 and 10.40am.

I hope we can soon all enjoy the beginning of spring with some fine sunshine.

Margaret Griffiths

Hair by Jess

07779 621229

Clifton Upon Teme

Instagram page: #hairbyjessmorris

The Dust Fairy

Domestic cleaning service in Clifton on Teme, covering from Bromyard to Abberley.



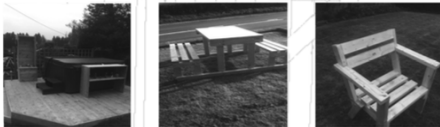
E: the_dust_fairy_cleaning@outlook.com

T: 07591 816821

Facebook: @thefairyofthedust

BILLS GARDEN GATES AND TIMBER PRODUCTS

- Garden Furniture
- Log Stores
- Chicken Runs
- Aviaries
- Storage
- Decking
- Fences
- Your Choice



...and more made to order locally from FSC treated or untreated timber. Bespoke and renovations also undertaken

For more information contact Bill

- Tel: 07580 274999
- Great Witley 01299 896681
- Website: www.billsgardengates.co.uk
- Email: billsgardengates@btinternet.com



www.facebook.com/billsgardengates

COLIN GRIFFITHS

GROUNDWORKS CONTRACTOR

MARTLEY, WORCESTERSHIRE

"A Business built on a solid foundation"

Main Sewer Connections
Septic Tanks
Foundations to D.P.C.
Concrete & Tarmacing
Site Clearance
Foul & Storm Drainage etc.

For all your private & industrial groundworks

For a personal and efficient service please contact Colin on,

TEL. 01886 821283 MOB. 07836 772501

Antique Mechanical Clock Repair & Restoration

Based in a fully equipped workshop and serving the wider local community

Antique or period, grande or petite sonnerie, quarter repeater or a more modest family longcase or mantel clock.



When the 'heartbeat' of your home or collection requires maintenance, repair or restoration, contact your local specialist for a no obligation quote

Bruce Pike

07908 867887

brucepike.bp@gmail.com

Collection and delivery service provided

LEE JAMES CARPENTRY & JOINERY

Qualified and experienced in all aspects of carpentry

- Kitchens supplied and fitted
- Roofing
- 1st and 2nd Fix
- Renovations – old & new
- Oak timber frames
- Plastic fascia & soffits
- Loft conversions
- Doors & windows

Quality and Satisfaction Guaranteed

For free quotes, competitive prices and a professional service phone:
(01886) 821151
07779 073870

Chimney Sweep

Andy Johnson

- Certificate issued
- Weekend/Evening sweeps available
- Traditional brush/Power sweep

01886 821933 / 07798 790913



REGISTERED MEMBER
www.instituteofchimneysweeps.co.uk



Physio In The Sticks

www.physiointhesticks.co.uk

Musculoskeletal Sports & Neuro

Mobile Physiotherapy Home visits

Let us help you get back to what you enjoy doing!

Amanda Stephenson

Chartered Physiotherapist

07398 495819

info@physiointhesticks.co.uk



Do you have a Will? Never had time to get it written?

Writing your Will and planning for later life can feel like a daunting process...



It doesn't have to be! I'm Stephanie

I guide you through the process of writing your Will and Lasting Powers of Attorney

Call me to find out more
07966366505

The Will Writing Group



07966366505 | Info@thewillwritinggroup.co.uk
www.thewillwritinggroup.co.uk



- Bookkeeping Services
- Personal Tax Returns
- VAT Returns
- Payroll
- Management Accounts
- Year End Accounts
- Corporation Tax Returns
- Budgeting & Forecasting

Rachel Perks

ACMA CGMA FIAB

Tel: 07484 161382

rachel@perksaccountancy.co.uk

www.perksaccountancy.co.uk

Laugherne Farm House, Martley
Worcestershire, WR6 6QB

Church Matters

by Nigel Roberts

March 1 is celebrated in Wales as the day St. David, Dewi Sant died. It's a day leeks and daffodils are worn by children to school.



He was known as he grew up for his faith, his miracles and sayings. When he was a young man, David left home to go and study under a highly respected teacher named Paulinus. The teacher was growing old and to his great sadness he was growing blind. He asked all his pupils to try and cure him, but none was able to do so. Then David touched the old man's eyes and by a miracle, he was able to see clearly again. Eventually David decided to devote his life to God and became a missionary.

One day there was a great meeting of church people in Llanddewi Brevi. They wanted to choose a new leader for the church in Wales - someone whose faith was strong. Many people spoke at the meeting but none could be heard!

Old Paulinus was in the crowd and he urged the crowd to send for David whom he knew as a wise man. As David stood on a mound and prayed, a dove landed on his shoulder, the sign of the Spirit of God. As he spoke, all listened and it was agreed he should be their new leader.

David led the people wisely, but continued to live as a monk.

One Sunday he preached a sermon. "Be joyful. Keep the faith. Follow the example I have set and remember the little things that you have seen me do." This became one of his best-known sayings.

In St Kenelm's, there is an active group of Friends who raise money for the 'little things'. In recent times we have replaced a light at the Lychgate, we are buying a ramp for the step into the church and soon a heater to keep the organist from getting cold!

Please support our activities planned for the coming year starting with a coffee morning and table top sale on April 12 in the Pavilion at 10am, in conjunction with Clifton Rainbows.

So please remember the little things that can be just as important as the 'big things'!

CHURCH SERVICES IN CLIFTON, THE SHELSLEYS AND LOWER SAPEY (HARPLEY)

March 2025

Sunday 2nd March

10.30am: Holy Communion, St Kenelm's, Clifton

10.30am: Morning Praise, St Bartholomew, Harpley*

Sunday 9th March

10.00am: Muddy Boots Launch Service, Rock Church

Thursday 13th March

12.45am: Soul Space, Clifton Village Hall, Rowberry Room

Sunday 16th March

6.30pm: Evensong, St Kenelm's, Clifton

Wednesday 19th March

10.30am: Communion, St Andrews, Shelsley Walsh

Saturday 22nd March

2.00-4.00pm: Daffodil Festival, Stanford Church

Sunday 23rd March

10.30am: Circle Service, St Bartholomew, Harpley*

Thursday 27th March

12.45am: Soul Space, Clifton Village Hall, Rowberry Room

Sunday 30th March Mothering Sunday

10.30am: Mothering Sunday Service, St Kenelm's, Clifton

*All services at Harpley are to be confirmed nearer date, due to building works

CALENDAR OF EVENTS

MARCH

- 1 Clifton WI meeting: Lost Worcester, Clifton VH, 7.30pm
- 5 Clifton Friendship Club annual birthday meeting, Clifton VH, 2.30pm
- 6 Clifton Parish Council meeting, Clifton VH, 7.40pm
- 8 Clifton Rural Reels, 'Paddington in Peru', Clifton VH, 4pm
- 8 Shelsley PCC's CurryOki Night, Shelsleys VH
- 11 Clifton WI Meeting, 'Lost Worcester', Clifton VH, 7.30pm
- 11 Shelsleys Parish Council meeting, Shelsleys VH, 7pm
- 13 Teme Valley Wildlife Group, Stoke Bliss and Kyre VH, 7.30pm
- 14 Charity Opera Recital with Valery Sherlock, The Hope, Clifton, 6.30pm
- 15 Race Night, Clifton VH, 6pm
- 19 Clifton Friendship Club, wildlife photographer, Clifton VH, 2.30pm
- 21 WCC Mobile Library, Clifton VH, 9.45am / Lower Sapey, 10.20am
- 22 Daffodil Day Celebration, Stanford VH, 2.30-5pm

APRIL

- 2 Clifton Friendship Club meeting, Clifton VH, 2.30pm
- 8 Clifton WI meeting, Clifton VH, 7.30pm
- 6 Shelsley Valley Nature Walk, from All Saints Church, 11am
- 12 Clifton Rural Reels (probably the new Bob Dylan film tbc), Clifton VH
- 12 Table top sale and coffee morning (Clifton Rainbows and Friends of St Kenelm's), Clifton Pavilion, 10am-12noon
- 18 Mobile Library, Clifton VH car park, 9.45am-10.15am
- 26 Gardeners Question Time, Harpley Church, 7pm

MAY

- 5 Official opening of Clifton Recreation Ground

CHURCH CONTACTS

Oversight Minister: Rev Julia Curtis 01886 853286 revjuliacurtis@gmail.com
 Christenings, Weddings, Funerals: Rev Jen Denniston 07783 432017
 jendenniston@gmail.com

Jill Smith 01886 853311 Pat Snelling (Clifton) 01886 812443

All Saints, Shelsley Beauchamp / St Andrew's, Shelsley Walsh Church Wardens:

Kate Hurst 01886 812184 kathrynhurst@btopenworld.com
 Holly Perks 01886 812369 hollyperks@me.com

St Kenelm's, Clifton:

Ruth Wilson (Church Warden, incl. Warm Space) ruth.wilson38@btinternet.com
 Anne Gayden (PCC Minutes Secretary) & Jackie Gilbert

St Bartholomew's, Lower Sapey (Harpley) Church Wardens:

David Richards / Liz Younge lowersapeychurchwarden@gmail.com

LOCAL LITTER PICK

Litter picking teams from Clifton, Harpley and the Shelsleys cleaned up roadside rubbish along local lanes last month as part of the annual litter picking drive, organised by Candy Connolly.

Among items found by the teams were a workman's steel capped boots, gin & tonic mixers, five bottles of fine white wine and half a plastic bottle of milk.

Pictured below: (L-R) Candy Connolly, Sue Johns and Maggie Newman.



Pictured below: Harpley resident Liz Rigby, along Hollybush Lane and Dot Millward.



G HERBERT BANKS

EST. 1898



125 Years of Professional Property Advice

- Estate & Letting Agents
- Landlord & Tenant Negotiations
- Auctioneers
- Chartered Surveyors
- RICS Registered Valuers
- Land & Estate Management
- Planning Consultants
- Rural Consultancy Services
- Professional Services
- AMC Finance



RESIDENTIAL • AGRICULTURAL • COMMERCIAL

Chartered Surveyors & Estate Agents

01299 896 968 | gherbertbanks.co.uk



Contributions for the April 2025 edition by Friday 14 March 2025 please, to:
editortemetriangle@gmail.com

Printed by Orphans Press of Leominster Tel: 01568 612460